



Sask **ROYAL**

SATURDAY, JUNE 18, 2022 | DAKOTA DUNES GOLF LINKS

SALE

SASKATOON, SK | GOLF BEGINS AT 10 AM | SALE TIME 7 PM



Sask ROYAL

SATURDAY, JUNE 18, 2022 | DAKOTA DUNES GOLF LINKS

SALE

FROM THE DESK AT T BAR C

To say “we are pumped” about this lineup of the Charolais industry’s breed leaders would be an understatement! After decades on the shelf, this exciting event will be rekindled on June 18th at the beautiful Dakota Dunes Resort and Convention Centre just minutes south of Saskatoon on Highway 219. The sale lineup is dynamic and outstanding in every category. The dams of lots represented are undoubtedly the most prolific and predictable foundation females in the Charolais Breed. Mating’s to the industry’s leading sires are those with a proven track record and combined, make “no risk” packages. Embryos and progeny of show champions are represented throughout this feature offering. The picks offer unlimited opportunities whether you are a new breeder or a seasoned veteran... the 2022 Sask Royal offers elevated ROI (return on investment). Whether you are seeking embryos, flushes, picks or semen, the field is open to upgrade your individual program presented by the breed’s leading stockmen. The Charolais breed has proven over decades to be the “go to breed” for the highest profit margins whether you are a producer, a feeder, a packer or Mrs. Consumer.

June 18th is an ideal day to be with us (after spraying and before haying) to spend a weekend in Saskatoon... lose a few golf balls at one of Canada’s leading golf resorts, share a bit of fellowship, check out the casino and be a part of reliving history at the new Sask Royal... an event where history will be made.

Plan to be with us and “catch the Charolais fever!”

If we can assist in any manner, please give the T Bar Team a call!

- CHRIS POLEY



CHRIS POLEY
306-220-5006



SHANE MICHELSON
403-363-9973



BEN WRIGHT
519-374-3335



SALE DAY CONTACTS:

AUCTIONEER

CHRIS POLEY 306-220-5006

SALE STAFF

BEN WRIGHT 519-374-3335

SHANE MICHELSON 403-363-9973

LEVI RIMKE 204-851-4515

ONLINE BIDDING

MARK SHOLOGAN 780-699-5082

ACCOMODATIONS

DAKOTA DUNES RESORT

203 DAKOTA DUNES WY, WHITECAP, SK S7K 2L2

833-987-1888

Schedule OF EVENTS

10 AM | TEXAS SCRAMBLE GOLF
TOURNAMENT

4 PM | SASKATCHEWAN CHAROLAIS
ASSOCIATION AGM

5:30 PM | COCKTAILS

6 PM | SUPPER

7 PM | SASK ROYAL SALE



TRUST X BERKLY ANN

LOT ONE

M6 BELLS & WHISTLES 258 P
SVY TRUST 6H
SVY STARSTRUCK 409B

M&M OUTSIDER 4003 PLD
BRCHE BERKLY ANN 8507 PLD ET
TR MS BERKLY 4711B ET



SVY TRUST 6H | SIRE

PE EPDS	CE	BW	WW	YW	MILK
	7.1	0.85	39.5	73	24

No question the most intriguing and exciting lot we have offered to date, a pregnant recipient carrying an unsexed calf off of our reigning undefeated 2021 Supreme Champion female at both Farmfair and Agribition. Berkly is undoubtedly the highest quality animal we have had the chance to own, being labeled one of the most unique females to ever reach the shavings in the GMC Chevrolet Arena in Regina. Being mated to the \$123 000 high selling SVY Trust, we see great potential in this opportunity. For as long as we have been in the Charolais breed, we have been on the hunt for cattle that offer this kind of quality, exclusivity, and a fresh but predictable pedigree. Berkly genetics will be kept exclusive by us and only offered through unique sales like this one in the future. Here is your one and only chance for 2022 to put your tattoo on your very own Berkly.

Recip cow is a 4 year old Char cross cow, due to calve on January 9, 2023.

CONSIGED BY CAYS CATTLE



STARSTRUCK 712E PREGNANCY

LOT TWO A

LOT TWO B

OUTSIDER X STARSTRUCK 712E

LT LONG DISTANCE 9001 PLD
M&M OUTSIDER 4003 PLD
M&M MS CARBINE 1567 PLD

HRJ CROWD FAVOURITE 515C
SVY STARSTRUCK 712E
SVY STARSTRUCK 409B

PE EPDS	CE	BW	WW	YW	MILK
	8.5	-0.5	41	75.5	20

BACKWATER JACK X STARSTRUCK 712E

PVF RIDGE 7142
WIA BACKWATER JACK 060 P
BRCHE TR DORY 6501

HRJ CROWD FAVOURITE 515C
SVY STARSTRUCK 712E
SVY STARSTRUCK 409B

PE EPDS	CE	BW	WW	YW	MILK
	-	-	-	-	-

OFFERING CHOICE

Here's an opportunity to get in on the famous Starstruck cow family! We were able to purchase Starstruck 712E from the Serhienko's this past winter. 712 has sold 3 calves averaging \$28,000 and can't wait to see what she can produce next. We have IVF flushed her this spring to the proven Outsider bull and the new Backwater Jack bull. The recipis are Simmental cows from our commercial herd.

The Outsider embryos were implanted on April 26 and the Backwater Jack embryos on May 4, 2022. Recip to be picked up by September 30, 2022.

CONSIGNED BY W2 FARMS

PREGNANT RECIPIENT

feeds®
ch company

Masterfeeds®
an Altech® company

m

2019

2019



HOULIO X PEACHES

LOT THREE

SKW EXPEDITION 89C
ELDER'S HOULIO 4H
WRANGLER PRETTY LADY 98C

GERRARD PASTOR 35Z
SOS PEACHES 42B
ALT SPUR ZOE 255W

PE EPDS	CE	BW	WW	YW	MILK
	0.7	2.5	56.5	107.5	25.5

- Dam that stands out in any herd, regardless of age.
- 2016 Reserve National Champion Senior Female.
- Dam of SOS Pandemic 168H.
- Acquired from SOS dispersal in Dec 2021
- This embryo out of Elder's Houlio 4H, the Canadian high selling Charolais bull in 2021, is already "money in the bank."

Recip is due to calve January 17, 2023.

CONSIGNED BY HIGHWAY 21 AND WES BOTT



HOULIO 4H | SIRE

UPDATE

13 Pregnancies confirmed of this mating - Buyers selection to be made by April 1, 2023 of the resulting live calves, male or female



JEHU X LANZA HOMBRE 645D

LOT FOUR

SCR TRIUMPH 2135
SCX JEHU 233E
SCX MISS MAGNUM 109X

LT LANZA 1427 PLD
MAIN LANZA HOMBRE 645D
MAIN RHAPSODY HOMBRE 306A

PE EPDS	CE	BW	WW	YW	MILK
	5.8	-0.3	54	119.5	24

- 645D is a very productive, sharp fronted female with a perfect udder.
- Her first daughter has already raised a herd bull going to HEJ Charolais
- Her second daughter is in the Highway 21 program.
- Her first son MAIN Highwood was the Char-Maine high seller going to Coyote Flats Charolais and has a great set of calves on the ground this spring
- Her 2021 heifer calf is owned by Char-Maine/Highway 21 and CJL Livestock and will be on the show road this fall.
- She is Homo Polled

Recip is due to calve on February 9, 2023

CONSIGNED BY CHAR-MAINE RANCHING AND HIGHWAY 21



JEHU 233E | SIRE



LANZA HOMBRE | WITH CALF

PREGNANT RECIPIENT

UPDATE

7 Pregnancies confirmed of this mating - Buyers selection to be made by April 1, 2023 of the resulting live calves, male or female



BY

CHOICE OF PREGNANCY

LOT FIVE A

KENTUCKY RAIN X EXCELLING LADY

TR PZC MR TURTON 0794 ET MVX COUGARHILL HANK 720G
 PCC KENTUCKY RAIN 836F FVC EXCELLING LADY 15E
 MISS PRAIRIE COVE 407B P-3 LADY PERFECT 5-157E

PE EPDS	CE	BW	WW	YW	MILK
	4.9	1.3	40.5	73	21.5

LOT FIVE C

RAGE X MILLIE

CIRCLE CEE LEGEND 307A MERIT ROUNDUP 9508W
 SOS RAGE 128C FVC MILLIE 3B
 ALT SIERRA 80Y HBC RAMONA 208Z

PE EPDS	CE	BW	WW	YW	MILK
	2.8	0.1	52.5	95	20



SON OF EXCELLING LADY 15E



KENTUCKY RAIN | SIRE



MILLIE | DAM



HOLY WATER | SIRE

LOT FIVE B

HOLY WATER X EXCELLING LADY

HRJ DIRTY HARRY 603D MVX COUGARHILL HANK 720G
 HRJ HOLY WATER 55H FVC EXCELLING LADY 15E
 JWX DANDY 70D P-3 LADY PERFECT 5-157E

PE EPDS	CE	BW	WW	YW	MILK
	2.8	2.3	47.5	93	18.5

LOT FIVE D

KENTUCKY RAIN X CINDY

TR PZC MR TURTON 0794 ET JWX SILVER BULLET 524W
 PCC KENTUCKY RAIN 836F HC CINDY 206Z
 MISS PRAIRIE COVE 407B HC WINTER LADY 916W

PE EPDS	CE	BW	WW	YW	MILK
	6.1	0.8	42	84.5	21.5



CINDY | DAM



RAGE | SIRE

A great opportunity to capitalize on some of the best genetics out of Flat Valley Cattle Co. When selecting candidates to flush and multiply only proven females are selected. HC Cindy 206Z weaned off a bull calf over 1000 lbs her first year and has never looked back. She has 10 milking females in the herd to date and more to come. FVC Millie 3B has not only produced some of the top females in the herd but also Champions. Producing the Grand Champion Pen of Bulls in the Alberta Select in previous years, along with one of the top bulls in the SCA Players Club at agribition. Looking forward to one of the newest flush females; FVC 15E produced one of the high selling bulls in the latest Simple as Black and White Bull Sale. It is a no miss opportunity to select a mating that is chocked full of genetics that work, maternal traits, a phenotype everyone loves and performance traits to move your program forward.

Recips are due to calve on January 9, 2023.

CONSIGNED BY FLAT VALLEY CATTLE CO.

PICK OF THE 2022 MALE OR FEMALE CALVES FROM HOWE-COULEE CHAROLAIS

LOT SIX



HKS MS PATSY 226A | DONOR DAM



HENDRIX 152H | SERVICE SIRE



SKW JAVA 140C | DONOR DAM



CONNECTION 195G | SERVICE SIRE

It's always great to be a part of an exciting event in Saskatchewan and when we heard what the SCA was planning, we definitely wanted to be apart of it. We wanted to sell something that represents who we are and what we are striving to produce. We thought it fitting to offer a pick of our entire calf crop to celebrate 40 years as a member of the Canadian Charolais Association at this inaugural event. You will see what we are accomplishing with our herd when you come tour and make your selection. These calves are out of strong footed, easy fleshing females with beautiful udders but still capture the growth and performance we feel is needed in the industry. Some red factor genetics included as well! The Service Sires we have carefully selected out of the top end of some of the best seedstock operations in the country to complement these females. The main two herd sires, Connection and Hendrix, both bring huge attributes to the table. Connection brings calving ease, shape, hair and growth on impeccable feet. Hendrix brings more bone, shape and performance to the program. Both of these sires are complemented with a selection of AI sires and walking bulls to add some different out cross pedigrees to the operation. Also included in this pick will be our embryo calves from our SKW Java 140C and HKS Patsy 226A donor cows off Connection 195G and Crowd Favourite 515C.

If your selection is from the heifer calf pen, it needs to be picked by October 1st. If you are selecting a bull calf, your decision needs to be made by December 1st. We are more than willing to work with the purchaser on further management of their selection. We reserve the right to one flush at the buyers' convenience and our expense on a female or a 1/3 semen interest on a bull selection.

Please contact Kelly at 306 313 2129 with any questions.

CONSIGNED BY HOWE-COULEE CHAROLAIS

PICK OF THE WOOD RIVER CHAROLAIS 2022 HEIFER CALVES

LOT SEVEN

Featuring progeny of these outstanding herdsires: LT Ledger 0332P, SOS Harvester PLD 61C, Tri N Hammer Time 5148E, Diamond W Heatwave 7H, JWX High Road 308H, and Elders Compadre 13H. Wood River Charolais have been breeding Charolais cattle for 47 years.

Selection to be made by December 31, 2022.

CONSIGNEE BY WOOD RIVER CHAROLAIS



HEATWAVE 7H



COMPADRE 13H



HIGH ROAD 308H



WOOD RIVER PRINCESS 13Y



PICK OF THE 2022 HEIFER CALVES FROM VOEGELI BROS. CHAROLAIS

LOT EIGHT

We are super excited to be offering pick of our 2022 heifer calves in the Sask Royal Sale. Our philosophy is simple, a cow should raise a calf every year that is as good or better than she is. We're not big in numbers, but we are big in quality. Our bloodlines consist of the tried and true. The sires represented are some of the best female producers in the Charolais breed.

Selection to be made by August 15, 2022.

CONSIGNED BY VOEGELI BROS. CHAROLAIS



Diamond W Premium 50E

Premium was bought in the 2018 Diamond W Bull Sale. His daughters have everything we look for in our females. Neck extension, spring of rib, and are easy-doing. There are some fancy Premium daughters in the group.



FTCC Bold Design 20G

20G was the high seller in the 2020 Genetic Distinction Bull Sale. On the top side of his pedigree you'll find Turton 0794. The female side is just as powerful, Wood River Princess 13Y, the many time champion as a bred heifer and two year old pair. His calves have that extra eye appeal and a hair coat to die for.



Dog Patch Houston 93G

We selected Houston from the 2021 Best of the Breeds Bull Sale, where he was Dog Patch's high seller. You'll find MVY All Star 61A and Rolling D Summit on the sire's side. On dam's side you'll find the RBC Supreme Champion Bull, Sir Gridmaker 2W. 2022 is Houston's first calf crop. We are impressed with the length of body and muscle shape his calves have. The Houston group offers you some power females with that extra eye appeal.



PICK OF THE BECK FARMS BRED HEIFERS

LOT NINE



TYPICAL BECK FARMS TWO YEAR OLDS

Beck Farms is pleased to offer pick of their 2021 females in the Sask Royal sale. Every year our two year olds raise bulls that are features and high sellers in our annual bull sale. This year's group is exciting and diverse, whether you are looking for a brood cow, a future donor, or one that could hang a halter they are all here. Anchored by Marksman, Braxton, Citation and Affinity daughters. Over 80 heifers will be bred starting May 20 to Beck's Innovation (high seller in our 2020 sale to C2 Charolais), Beck's Manifest (second high seller in 2022 sale to MJT), and our outcross heifer bull Beck's Honor. Selection to be made by April 15, 2023. This allows you to take the guesswork out of the udder type and guarantees you a live calf at side. Opportunities like this only offer high return on investment and should not be missed out on.

CONSIGNED BY BECK FARMS

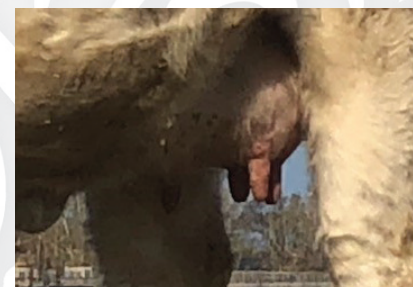


PICK OF THE JOHNSON RANCHING BRED HEIFERS

LOT TEN

It is truly an honor to be asked to consign to this special event. For a long time now Chris has been trying to get us to let some of our females go. When he called and suggested a pick of the bred heifers for this sale we couldn't say no. These heifers will be mostly sired by Kay R Rico. Our first Rico daughters calved this year and they have turned out awesome. They will all be bred to Legacy Grandmaster who we have calved for two years now. They come out easy but still turn into very marketable calves with a son as this years high seller to XXX Farms. We feel there is a lot of potential here in this pick and are excited to see where this heifer ends up.

CONSIGNED BY JOHNSON RANCHING



SAMPLES OF RICO DAUGHTER UDDERS



KAYR RICO 26F | LARGEST SIRE GROUP

Listening to our customers' demands for Homo Polled bulls with calving ease and lots of performance led us to Rico. We felt Rico checked every box in what we needed in a new herd bull. We saw his dam on the ACA summer tour and were very impressed with her. Rico's sire, Commissioner has been well received across Canada and there has been many sons selling for lots of money and a bull that can be used on heifers as well. It appears that Rico is going to be a key breeding piece in our Charolais herd.

PICK OF THE KAY-R CHAROLAIS COW HERD FLUSH

LOT ELEVEN

What an opportunity we have to get your hands on some genetics that have been kept for ourselves for years. We don't sell females very often and never before have we offered a pick of the cowherd flush but now is your chance. We have been raising Charolais cattle for 35 years and you get your pick from 180 working females. Our cowherd has been selected for highly maternal and productive females that can raise a high quality product while doing so in an efficient way. We believe your calf crop is only as good as the females they come from and we let our cows prove themselves first. Bid with confidence and get ready to reap all kinds of rewards.

Guarantee of 6 embryos.

CONSIGNED BY KAY-R CHAROLAIS



KAYR ANNABELLE 100J



KAY-R FARYN 814F



KAY-R DANA 632D



KAY-R JANIS 709E



KAYR COVERGIRL 26Y



KAYR MISS 125X



KAYR MISS BLAIR 404B



KAYR MISS 502C



KAYR MISS 518C



KAYR ANNABELLE 812U



KAYR MISS 910W



KAYR MISS 11Y

HC LADY RAIN 904G

LOT TWELVE

PEFC773364 | HC 904G | 01/01/2019 | POLLED

JWX FIFTY SHADES 706Z

HTA PLD RAIN 258M

JWX DOWNTOWN 7C

CSS LADY RAIN 32R

JWX MERCEDES 20Z

CSS LADY SPRING WIND 59L

EPDS	CE	BW	WW	YW	MILK
	5.2	2.1	48	88	15



HC 113J | SON, SOLD FOR \$40,000 TO WILGNEBUSCH AND FERME LOUBER



HC 167J | SON, SOLD FOR \$17,000 TO CK STOCK FARM

Lady Rain created quite a stir this spring with her first 6 sons headlining our sale and averaging 14125. Some of the highlights were HC Johnstown 113J commanding 40,000 to Wilgenbush Charolais & Ferme Louber and HC Jackpot 167J bringing 17000 to CK Stock Farm. Lady Rain has proven at her young age she can be an elite producing donor and a top dollar earner. She is what we are striving to produce here at Hunter Charolais. Phenotypically Lady Rain is striking and sound made. She is big bellied and deep chested while maintaining a clean front end. There is an abundance of power and performance in this pedigree with her sire being downtown. We think the opportunities are endless with what you can mate this female too.

Guaranteed 6 freezable embryos. Flush to be performance at Swan Valley Vet Services, cost of the flush is at the buyers expense.

CONSIGNED BY HUNTER CHAROLAIS



THE RIGHT TO FLUSH

C&S Ms ESTER 716

LOT THIRTEEN

PFC764980 | CEE 716E | 03/11/2017 | POLLED

LT BLUEGRASS 4017 P
RBM TR RHINESTONE Z38
HC RHINESTONE 5100

CML DIABLO 2X
C&S MS CHENILLE 313
C&S MISS ELEGANT 635



CIRCLE CEE VIRTUE 113J | DAUGHTER



NGC CAPITALIST 118J

EPDS	CE	BW	WW	YW	MILK
	11.9	-3.7	31	63	21

Ester was selected out of the Fort Worth Stock Show Sale in 2019 where she was the high seller and Division Champion. She is angular, dynamic, stylish, possesses a picture perfect udder and has quickly become our lead off donor. She has been admired by everyone who has laid eyes on her! To her credit she has naturally raised the great calving ease bull CEE SOS Command 970G, who has been utilized in the Thurston, Cornerview, Bogart and Circle Cee programs with tremendous results! 2 outstanding yearling ET daughters by LAE Memphis (CEE 13J and RETZ 5J) will be featured in our fall show string! A couple of ET CCC WC Resource daughters at 2H Charolais in Minnesota are turning heads this spring. We will allow the purchaser of the cycle to utilize any bull in the Circle Cee inventory, including the newly acquired NGC Capitalist 118J ET – a powerful, outcross, multi EPD trait leader who was the high seller in the recent Great Northern Bull Sale in Minnesota!!! The opportunities are endless! Ester is available to be IVF cycled immediately following the sale. She has been flushed 3 times and has averaged 10 embryos per flush.

Selling one IVF cycle with a minimum of 6 Grade #1 embryos to be performed at DBK Genetics in Morinville, AB. No cap or maximum. Buyer will be responsible for all costs associated with the IVF Cycle.

CONSIGNED BY CIRCLE CEE CHAROLAIS



FORCE OF NATURE x LILY

LOT FOURTEEN

CCC WC REDEMPTION 7143 PLD ET
PCC FORCE OF NATURE 122J
BRCHE BERKLY ANN 8507 PLD ET

TR MR FIRE WATER 5792RET
PZC LILY 5013 ET
THOMAS MS IMPRESSIVE 0641



LILY 5013 ET | DAM

PE EPDS	CE	BW	WW	YW	MILK
	7.4	-0.5	39.5	80	28.5

Rare Air in these ultra high quality Charolais genetics. The talk of the Yards in 2022 PCC Force of Nature 122J mated to the Champion of the World and 2 time Supreme Champion PZC Lily 5013 ET. If you want to put your self in the driver seat ahead of the game in the Charolais breed these genetics will take you to the front of the pack. PCC Force of Nature 122J created quiet a buzz in the Yards of the Denver stock show, he is an absolute beast from front to back and is out of the incomparable Berkly-Ann. PZC Lily 5013 ET has already proven she can raise extremely high quality seedstock last fall alone a bred heifer sold for \$20,000 to Eagle Valley Farms as well as a heifer calf for \$20,000 to C2 Charolais that were the lead off females at the Alberta Select. As an added bonus Prairie Cove Charolais will offer the option to the successful bidder to pay half down sale day and the remaining balance will be due Jan 1 2023.

Guarantee two pregnancies if implanted by a certified technician.

CONSIGNED BY PRAIRIE COVE CHAROLAIS



Kate Roberts

HOULIO x RHONDA

LOT FIFTEEN



HOULIO 4H | SIRE



BOUJEE 92J | DAUGHTER

SKW EXPEDITION 89C
ELDER'S HOULIO 4H
WRANGLER PRETTY LADY 98C

GERRARD PASTOR 35Z
MVY RHONDA 11D
MVY RHONDA 1Y

PE EPDS	CE	BW	WW	YW	MILK
	3.1	1.2	52.5	105.5	27.5

What a genetic package this will be to be a part of. Rhonda was our pick of the cows at the Springside Dispersal. We also purchased her heifer calf SOS Boujee 92J who was crowned 2021 Intermediate Heifer Calf Champion at CWA. Rhonda is big bodied, sound footed with superior udder structure. The mating to Elder's Houlio 4H could be a slam dunk. Houlio's calves are on the ground and have exceeded expectations to say the least with hair, look, hip, length and just keep getting better with age.

Guarantee two pregnancies per package if implanted by a certified technician. Exportable to USA and Australia

CONSIGNED BY ELDER CHAROLAIS FARM



TWO PACKAGES OF FIVE EMBRYOS

MISS 52G EMBRYOS

LOT SIXTEEN A

LOT SIXTEEN B

BOURBON X MISS 52G

CCC WC REDEMPTION 7143 PLD ET
PCC BOURBON 118J
BRCHE BERKLY ANN 8507 PLD ET

PRO-CHAR WINCHESTER 6D
STEPPLER MISS 52G
STEPPLER MISS 238E

PE EPDS	CE	BW	WW	YW	MILK
	7.9	-0.5	46	85.5	22.5

JACKPOT X MISS 52G

TURNBULLS DUTY-FREE 358D
SOS JACKPOT PLD 158J
MXS EVERLY 816F

PRO-CHAR WINCHESTER 6D
STEPPLER MISS 52G
STEPPLER MISS 238E

PE EPDS	CE	BW	WW	YW	MILK
	7.9	-0.6	59.5	110	21

Steppler Miss 52G is proving herself as great donor female. She was purchased by Sarah Galbraith out of our 6th Annual Female sale for a commanding \$45,000 and has remained here at to be managed at Steppler Farms. This female has already sought the interested of Kay R Charolais and Circle 7 through the right to flush and embryos purchases. 52G first embryos calves have hit the ground here and they are impressive; consistent, heavy haired and extremely correct. They will be features in our fall females sale run and our long running bull sale! The matings to 52G are exciting to say the least; Bourbon and Jackpot. Bourbon our female maker, back by Berkly herself and Jackpot the Duty Free powerhouse. Great opportunity here to step into our industry leading genetics. Guarantee one pregnancy per package if implanted by a certified technician.

CONSIGNED BY STEPPLER FARMS

THREE EMBRYOS PER LOT



BOURBON 118J | SIRE



JACKPOT 158J | SIRE

TRIUMPH X MISS MAGNUM

LOT SEVENTEEN

SCR TUFFY 0119
 SCR TRIUMPH 2135
 SCR MS BABY DOLL 7140

SCX HILARIO 49T
 SCX MISS MAGNUM 109X
 SCX MISS CHICO 48P

PE EPDS	CE	BW	WW	YW	MILK
	4.7	-0.3	56.5	115	18.5

Here is an opportunity at some top end genetics. Full sibs to Jehu 233E. The great 109X X Triumph 2135 has been a no miss cross. A half sister to 109X crossed triumph also produced the SCX 50B bull, walking for High Bluff Stock Farms, so this genetic match up has been outstanding.

Guarantee one pregnancy if implanted by a certified technician. Embryos are not exportable.

CONSIGNED BY TRIPLE C CHAROLAIS

Full Sib

EMBRYOS TO THE
 \$245,000 HIGH SELLING
SCX JEHU 233E



MISS MAGNUM 109X | DAM



SCX JEHU 233E

JEHU X JEWEL

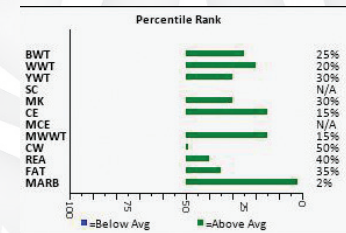
LOT EIGHTEEN

SCR TRIUMPH 2135
SCX JEHU 233E
SCX MISS MAGNUM 109X

BCA MONTI MONTANA
CML JEWEL 890F ET
M6 MS NEW JEWEL 0155 PL



JEHU 233E | SIRE



JEWEL 890F PERCENTILE RANK

PE EPDS	CE	BW	WW	YW	MILK
	7.5	-0.6	55.5	115	23

CML Jewel 890F is one of the shining Jewel's in the McLeod Livestock donor pen. 890F along with her two full sisters 889F, the dam of CML No Worries 64H, and 892F, will be 3 of the cornerstones donors of our embryo transplant program for years to come. The mating of SCX Jehu 233E and CML Jewel 890F represents one of the strongest EPD matings you will find anywhere in the Charolais breed! Not only will the resulting offspring have an elite EPD profile, they will also be phenotypically superior. We already have calves on the ground sired by SCX Jehu 233E out of the Jewel cow family and we are excited that three outstanding offspring from these matings will highlight our 2022 showstring and be feature lots in 2023 McLeod Livestock Bull Sale!

Guarantee one pregnancy if implanted by a certified technician.

CONSIGNED BY MCLEOD LIVESTOCK



OUTSIDER X PRAIRIE COVE 19H



OUTSIDER 4003 | SIRE

LOT NINETEEN

LT LONG DISTANCE 9001 PLD
 M&M OUTSIDER 4003 PLD
 M&M MS CARBINE 1567 PLD

TR PZC MR TURTON 0794 ET
 MISS PRAIRIE COVE 19H
 MISS PRAIRIE COVE 604D

PE EPDS	CE	BW	WW	YW	MILK
	7.8	-0.6	37	70	23.5

What an exciting mating – a proven foundation sire and Miss Prairie Cove 19H. It is difficult to copy a mating that combines high maternal traits coupled with calving ease. Miss Prairie Cove 19H is ideal in phenotype which was exemplified by judges' approval as she was Reserve Junior Champion Female at Canadian Western Agribition and Stockade Roundup at Lloydminster. Her maternal strength is directly affected by her mother, Miss Prairie Cove 604D, a prolific donor female for Tyler and Tim Bullick. 604D has an unbelievable track record with sons working for Blind Creek Charolais, Caprock Charolais and Flat Valley Charolais. Daughters of this foundation dam have been selected by Serhienko Cattle Company, Legacy Charolais, and Caprock Charolais to mention a few. This is true Royal Blood!

Guarantee one pregnancy if implanted by a certified technician.

CONSIGNED BY BAR SK CATTLE CO.



OUTSIDER X PRAIRIE COVE 44H

LOT TWENTY

LT LONG DISTANCE 9001 PLD
M&M OUTSIDER 4003 PLD
M&M MS CARBINE 1567 PLD

CCC WC RESOURCE 417 P
MISS PRAIRIE COVE 44H
MISS PRAIRIE COVE 407B

PE EPDS	CE	BW	WW	YW	MILK
	9.4	-2.3	39	69.5	21

We saw this outstanding female offered at the Superstar Charolais Sale in December for \$38,500 and fell in love with her mass, depth and femininity. She is raising a phenomenal heifer calf that we feel has a bright future. We have decided to offer 3 elite embryos and will be the only ones offered this year. Don't miss out on the chance to be apart of these genetics!

Guarantee one pregnancy if implanted by a certified technician.

CONSIGNEE BY LONGVIEW CATTLE COMPANY



OUTSIDER 4003 | SIRE



THUNDER ROLL x MISS TRIM

LOT TWENTY ONE

TR MR FIRE WATER 5792RET
JIL THUNDER ROLL 69Z
JIL SENSATION 71S

JWX SILVER BULLET 524W
RPJ MISS TRIM 298Z
RPJ MISS TRIM 72X

PE EPDS	CE	BW	WW	YW	MILK
	2.1	2.6	38.5	77.5	25.5

When we came across the Miss Trim 298Z female as a heifer calf, at the Perrot Martin Dispersal in 2012, we knew she was really good and that we had to own her. What we didn't know, is that she would be an absolute game changer for us. 298Z has been one of our most influential foundation females. She's crossed well with whatever we have bred/flushed her. She's a massive bodied, really easy fleshing, good footed, big boned female, with lots of milk, who has never done anything but an outstanding job on her calves. Her first calf, ONL Chara 4B, was purchased by Wilgenbusch Charolais. She then raised ONL Hot Dam 14C, who would be a full sib to these embryos. 14C has raised a daughter that sold to W2 Charolais and a son that is walking our pastures, as well as other high-quality progeny. 298Z has always flushed well; she gave a total of 39 embryos in her last two flushes. Her progeny are successful in the show ring and sale ring. If we put in later embryos, we always go to the 298Z's, because of their growth and easy fleshing ability. 298Z is the dam of our 2021 bull sale high seller to Circle Cee Charolais, as well as a bred that sold to Sugarloaf Charolais and a heifer calf that sold to Wilgenbusch Charolais in the Superstar Sale last December. Just this year, we had a commercial customer that purchased a full sib to these embryos in a previous bull sale, tell us that the bull is now 6 years old, the calves come easy, grow great and they are still using him. We could go on and on about what this cow has done for us. She's truly a great one. We purchased JIL Thunder Roll 69Z from Future Farms when we started in the Charolais breed. He sired the Reserve Denver National Champion Bull and the Reserve Farmfair National Champion Female in the same year. He sired the National Champion Bred Heifer at the Royal in 2016, ONL Obession 5C, purchased and shown by EMB Charolais. He sired ONL Daddy Cool 4C who won Farmfair in 2017. This is just a few examples of his accomplishments as a sire; he's done an awesome job for us. Most recently, he was the sire of the dam of our 2022 high selling bull, WGD Ruger 8J to Springside Farms. This is a proven cross and it certainly has worked for us! Follow us on Facebook at Daines Cattle and O'Neill Livestock for more information. **Guarantee one pregnancy per package if implanted by a certified technician. Embryos are stored at Davis-Rairdan, and are exportable.**

CONSIGNED BY O'NEILL LIVESTOCK



THUNDER ROLL DAUGHTER



THUNDER ROLL SON



THUNDER ROLL SON



MISS TRIM 298Z DAUGHTER



MISS TRIM 298Z SON



MISS TRIM 298Z SON



MISS TRIM 298Z | DAM



THUNDER ROLL | SIRE



FULL SIB TO EMBRYOS



FULL SIB TO EMBRYOS

TATTLE TALE EMBRYOS

LOT TWENTY TWO A LOT TWENTY TWO B

PROFOUND X TATTLE TALE

CCC WC REDEMPTION 7143 PLD ET SPARROWS FARGO 811U
 SVY PROFOUND 145J CIRCLE CEE TATTLE TALE 139Y
 SVY STARSTRUCK 901G MEDONTE RUMOURS 9R

PE EPDS	CE	BW	WW	YW	MILK
	9.6	-0.1	39.5	77	23.5

BOURBON X TATTLE TALE

CCC WC REDEMPTION 7143 PLD ET SPARROWS FARGO 811U
 PCC BOURBON 118J CIRCLE CEE TATTLE TALE 139Y
 BRCHE BERKLY ANN 8507 PLD ET MEDONTE RUMOURS 9R

PE EPDS	CE	BW	WW	YW	MILK
	10.2	-0.9	41	76.5	21.5

Circle CEE Tattle Tale 139Y has been garnering lots of attention and has had many admirers over the years. She has significant size, length, power and over all mass while still having that feminine make and presence paired with her best attribute, her udder, which is perfectly balanced and level with exactly the right teat size. She carries a giant foot, is great on the move and has excellent flexibility. For us when looking into sire's we need to have good cow families standing behind them. Both of these sired lots come from some of the greatest and hardest to acquire cow families in the breed and arguably the industry. With these lots being one of the only ways to tap into those cow families, we offer these lots with great excitement and anticipation for the resulting offspring. We expect big things from these genetic blends.

Guarantee one pregnancy per package if implanted by a certified technician.

CONSIGNED BY ALTON CENTURY FARMS

THREE EMBRYOS PER LOT



PROFOUND 145J | SIRE



BOURBON 118J | SIRE

WGD RUGER 8J

LOT TWENTY THREE

PEMC816608 | WGD 8J | 01/04/2021 | HOMO-POLLED
 LT JOURNEY 5208 PLD JIL THUNDER ROLL 69Z
 LT RANSOM 8644 WGD THE CRUSH 14D
 LT SHEILA 337 PLD JIL LASSY 141X

EPDS	CE	BW	WW	YW	MILK
	9.2	-1.5	37	80	23



FULL SISTER TO RUGER



RANSOM 8644 | SIRE

What an opportunity to add WGD Ruger 8J to the SOS line up! 8J checks all the boxes: eye appeal, length, homo polled, great cow family, and even better breeders. This LT Ransom son was our pick of all that sold this spring and he will be used extensively in our small herd, and every cow we are flushing this year. Very limited semen will EVER sell on this herd bull, so if you have that special cow you are looking to flush here is your chance. We believe this investment will pay huge dividends down the road, and semen from Ruger will be an easy decision to purchase at the Sask Royal.

CONSIGNED BY SPRINGSIDE FARMS, DAINES CATTLE AND O'NEILL LIVESTOCK



LT RANSOM 8644

LOT TWENTY FOUR

PMC793627 | 02/27/2018 | POLLED

LT QUEST 2203 PLD
LT JOURNEY 5208 PLD
LT MOLLY 3011 PLD

LT BLUE VALUE 7903 ET
LT SHEILA 337 PLD
LT MISS BREEZY 524

EPDS	CE	BW	WW	YW	MILK
	15.0	-5.8	47	94	23

Ransom's first calf crop to sell in Canada created plenty of interest in this spring's bull sales. He calves easy and his offspring carry added rib shape and hip muscling. Bred to perform, he ranks in the top 1% of the breed for BW and top 45% for WW & YW. His calves have excellent dispositions and sound structure. Ransom has been used very exclusively in Canada & this is your opportunity to breed some of your own.

CONSIGNED BY WILGENBUSCH CHAROLAIS

TWO PACKS OF FIVE UNITS



Kate Roberts



LOT TWENTY FIVE

TWO PACKS OF FIVE UNITS

M&M OUTSIDER 4003 PLD

PMC749963 | 04/01/2014 | POLLED

LT SILVER DISTANCE 5342P
LT LONG DISTANCE 9001 PLD
LT BELLE 7026 P

M&M RAPTOR 8122 PLD
M&M MS CARBINE 1567 PLD
MS COOLEY JPOT 1107N9

EPDS	CE	BW	WW	YW	MILK
	11.0	-2.9	39	65	19

CONSIGNED BY WRANGLER CHAROLAIS

LOT TWENTY SIX

TWO PACKS OF FIVE UNITS

LT WYOMING WIND 4020 PLD

PMC179840 | LT 4020D | 02/27/1994 | POLLED

WCR SIR DUKE 783
SCHURRTOP 5627
MISS SUGAR VALLEY 908

LT UNLIMITED CHAPS 0109
LT CHAP'S LADY 2170P
LT PRAIRIE MAIDEN 8095

EPDS	CE	BW	WW	YW	MILK
	7.0	0.8	41	71	17

CONSIGNED BY CHARLA MOORE FARMS



BY



Ya

LOT TWENTY SEVEN

FOUR PACKS OF FIVE UNITS

TRI-N CAPTAIN MORGAN 340A

QPMC352293 | NMF 340A | 02/14/2013 | HOMO POLLED | HOMO RED
 HARVIE REDEMPTION 36P TRI-N-PAYDAY 419P
 PRO-CHAR CPTN. MORGAN 8U TRI-N BUFFY 79T
 EFH DAISY MAE 30J TRI-N BUFFY 6R

EPDS	CE	BW	WW	YW	MILK
	7.8	-0.6	61	106	14

- EPDs top 3% WW, 10% YW, 15% Marb, 30% BW and 35% CE.
- what a legend in the Charolais business! The foundation of the red Charolais herd at TRI-N. The first time we have offered semen by public auction!!
- 2022 marks our 10th year of using the Captain Morgan influence as we owned his sire (Pro-Char Captain Morgan) and currently walk his son (TRI-N Red Baron).
- 21/25 of the red factor bulls in the 2022 TRI-N Bull Sale traced back to Captain Morgan 340A.
- 11 sons of Captain Morgan are currently working in purebred herds. His daughters and grand daughters are the base of our cow herd and were highly popular at the "Changing of the Guard" female sale. These genetics work!
- Come see his 15 year old dam this summer that still has perfect feet and udder and is raising a phenomenal Jehu bull calf this year!
- If you are serious about the red factor Charolais business don't miss this opportunity!

US qualified. Stored at Alta Genetics.

CONSIGNED BY TRI-N CHAROLAIS LTD.



CAPTAIN MORGAN DAUGHTER



RED BARON | SON

LOT TWENTY EIGHT

TWO PACKS OF FIVE UNITS

HTA WHITEHOT 105A

PMC130030 | HTA 105A | 01/19/1991 | POLLED
 TOWERVIEW EXCEL 3P ROXY'S JACK DEMPSEY 63R
 KJP SKY FIRE 51T SPARROWS PRISCILLA 8735W
 JOHNSON'S MISS 1M MISS WBS SPARJAG 35K

EPDS	CE	BW	WW	YW	MILK
	4.6	1.5	39	86	19

A bull that needs very little introduction in the Charolais breed, he was arguably one of the most influential bulls and has over 2300 registered progeny in Canada alone. Producing bulls that were in high demand from commercial and purebred breeders alike with awesome hair coats, performance and testicular development, he further proved himself with his daughters having flawless udders, strong maternal traits and longevity.

CONSIGNED BY HTA CHAROLAIS



LOT TWENTY NINE

LOT 29A: TEN AMPS OF SEMEN
 LOT 29B: TEN AMPS OF SEMEN
 LOT 29C: EIGHT AMPS OF SEMEN

Bijou

FMC49 | 58270B28 | 02/25/1966 | HORNED

PERDREAU
 SYLVAIN
 LEZARDE

MEPHISTO
 QUALIFIEE
 LADY

EPDS	CE	BW	WW	YW	MILK
	0.4	2.5	30	54	17

CONSIGED BY RISING SUN RANCH

LOT THIRTY

10 AMPS OF SEMEN

CADET-ROUSSEL

FMC122 | 23014 | 01/05/1967 | HORNED

SALOMON
 VAUOUR
 QUALITE

IGNACE
 NIGAUDE
 HURLETTE

EPDS	CE	BW	WW	YW	MILK
	6.9	0.6	31	69	17

CONSIGED BY RISING SUN RANCH



LOT THIRTY ONE

11 AMPS OF SEMEN

BUFFALO

FMC58 | 01/16/1966 | HORNED

ECUREUIL
OSCAR
LILIE

GREGOIRE
ILE D'AMOUR
FAVORITE

EPDS	CE	BW	WW	YW	MILK
	-0.5	2.2	33	58	9

CONSIGNED BY RISING SUN RANCH



LOT THIRTY TWO

1 AMP OF SEMEN

BELPHEGOR "BINGO"

FMC52 | 85045B09 | 02/07/1966 | HORNED

LASCAR
NEWTON
JALOUSE

MATINAL
PERVENCHE
KILMAINE

EPDS	CE	BW	WW	YW	MILK
	4.5	1.5	19	51	26

CONSIGNED BY RISING SUN RANCH

SEMEN DONATION LOT

LOT THIRTY THREE

FIVE UNITS OF SEMEN

All proceeds from the sale of this lot will be donated to the Saskatchewan Charolais Juniors. Semen in non-exportable, and shipping is at the expense of the buyer.

CONSIGNED BY PALMER CHAROLAIS.

TURNBULLS *DUTY-FREE* 358D

PMC701309 | 01/31/2016 | POLLED

PLEASANT DAWN MAGNUM 56T

PLEASANT DAWN MAXIMUM138X

PLEASANT DAWN MVP 316Y

CTP MISS GOOGLE 358Z

PLEASANT DAWN RIO 216P

RTP MISS SELECT 14K

EPDS	CE	BW	WW	YW	MILK
	8.3	-0.5	68	135	20



BY

BP 1



INTERNATIONAL TRANSPORTATION ESTABLISHED IN 1933



OFFERING A \$500 CREDIT

BRUCE & BUTCH POLAND

829 REST ACRES ROAD, PARIS, ON, CANADA N3L 3E3
519-442-3106 OR 519-442-6242 FAX 519-442-1122

TOLL FREE 877-442-3106

hsknill@pppoe.ca www.hsknilltransport.com

BP 2



WESTERNLITHO.CA



NEVER STOP

BELIEVING IN PRINT



WESTERN LITHO PRINTERS



POSTERS • PAMPHLETS • EVENT TICKETS • BUSINESS CARDS • CATALOGUES
PROMOTIONAL ADVERTISING • BANNERS & SIGNS - WE PRINT IT ALL

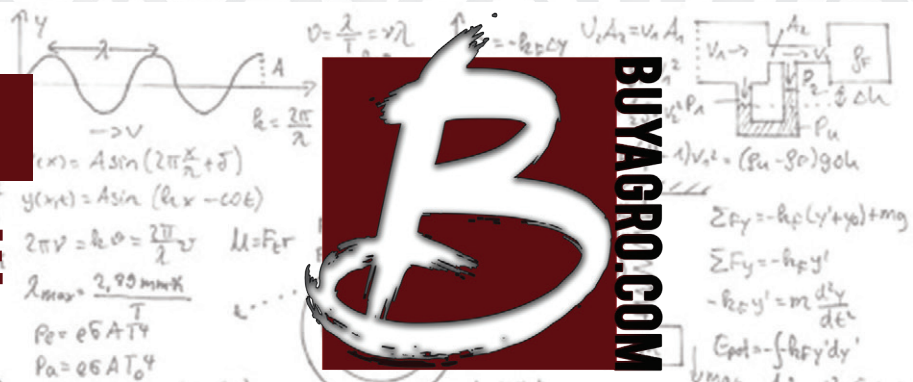
BP 3

LET US BE PART OF

YOUR FORMULA TO SUCCESS!

\$500 TOWARDS ANY BUYAGRO SERVICE

INCLUDING ONLINE CATALOGUES, E-BLAST, WEB-DESIGN, ETC.



BUYAGRO.COM

BP 4

Offering \$500 towards any of our services

Complete Reproductive Services Centre

Domestic and Export
Qualified Semen Collection
Owners Use Semen

Embryo Collection and Transfer
Certified for Export Production
IVF Flushes

Embryo and Semen
Storage and Transfer
Recip Program

1.587.887.1934

Rob F. Stables, DVM embryos@bowvalleygenetics.com
Facility located at Bassano, AB www.bowvalleygenetics.com

BOW VALLEY

EST. 2009

GENETICS

Advancing Reproductive Solutions

BP 5

\$500 CREDIT TOWARDS VETERINARY SERVICES

2 BROCK DRIVE., MOOSE JAW, SK S6H 4P8 306-692-4800 PEAKVET@SASKTEL.NET



CONSIGNORS

**ALTON CENTURY FARMS LTD.
LOT TWENTY TWO**

Blake, Julia, Eve and Garrett Alton
541 Siderroad 15N, Kincardine, ON N2Z 2X6
C: 519-440-6580
baltoncenturyfarms@gmail.com

**BAR SK CATTLE CO.
LOT NINETEEN**

Shannon and Kim Eaton and Family
Box 12651, Lloydminster, SK
S9V 0Y4
C: 780-872-9375
shannonwob@sasktel.net

**BECK FARMS
LOT NINE**

The Beck Family
Box 5, Lang, SK S0G 2W0
Wade: 306-436-7458
wcbeck@sasktel.net

**CAY'S CATTLE
LOT ONE**

Layne and Justin Cay
Box 155, Kinistino, SK S0J 1H0
Justin: 306-864-7893
Layne: 306-864-7303
rscay@sasktel.net

**CHAR-MAINE RANCHING
LOT FOUR**

Steve Quinton
Box 1178, Cardston, AB T0K 0K0
C: 403-653-7228
stevnquinton@gmail.com

**CHARLA MOORE FARMS
LOT TWENTY SIX**

Jordan Moore
Box 335, Redvers, SK S0C 2H0
C: 306-452-8454
jordanmoore_32@hotmail.com

**CIRCLE CEE CHAROLAIS
LOT THIRTEEN**

The Cholak Family
Box 86, Lamont, AB T0B 2R0
P: 780-485-7865
sscholak@shaw.ca

**DAINES CATTLE
LOT TWENTY FIVE**

Wyatt Daines, Kristi Allan, and Brigham Daines
28442 TWP 362, Red Deer County, AB T4G 0H1
P: 403-348-9753
wyattdaines@hotmail.com

**ELDER CHAROLAIS FARM
LOT FIFTEEN**

Ron & Donna Elder
Michael & Judy Elder
Box 37, Coronach, SK S0H 0Z0
Ron: 306-267-4986
Michael: 306-267-7730
relder@sasktel.net

**FLAT VALLEY CATTLE CO.
LOT FIVE**

Jamie and Amy Ehret and Family
Box 2, Hilda, AB T0J 1R0
C: 403-504-6265
flatvalleycattle@hotmail.com

**HIGHWAY 21 FEEDERS
LOT THREE AND FOUR**

The Miller Family
Box 60, Acme, AB T0M 0A0
Ed: 403-651-8637
Lyle: 403-888-3973
lindamiller@highway21group.com

**HOWE COULEE CHAROLAIS
LOT SIX**

Kelly and Julie-Anne Howe
74-325 4th Avenue SW, Moose Jaw, SK S6H 5V2
C: 306-313-2129
kelly_scott_howe@hotmail.com

**HTA CHAROLAIS
LOT TWENTY EIGHT**

Shawn and Tanya Airey and Family
Box 639, Rivers, MB R0K 1X0
Shawn: 204-724-8823
htacharolais@hotmail.com

**HUNTER CHAROLAIS
LOT TWELVE**

Doug and Marianne Hunter
Michael and Candace Hunter
Box 569, Roblin, MB R0L 1P0
Doug: 204-937-2531
Michael: 204-247-0301
Jimmy: 204-937-0219
huntchar@mymts.net

**JOHNSON RANCHING
LOT TEN**

Byron, Bernice and Wyatt Johnson
Box 132, Amisk, AB T0B 0B0
Byron: 780-806-3560
Wyatt: 587-281-2117
johnsonranching@gmail.com

**KAY-R CHAROLAIS
LOT ELEVEN**

Kasey, Arlana, Kord and Peri Phillips
Box 420, Waskatenau, AB T0A 3P0
Kasey: 780-656-6400
Kord: 780-650-2364
kphillips@mcsnet.ca

**LONGVIEW CATTLE COMPANY
LOT TWENTY**

Shar and Rayel Kaczmar
Box 453, Grenfell, SK S0G 2B0
Rayel: 306-451-0075
Shar: 306-451-7686
longviewangus@hotmail.com

**MCLEOD LIVESTOCK
LOT EIGHTEEN**

Rod and April McLeod and Family
Box 193, Cochrane, AB T4C 1A5
Rod: 403-540-7986
rodmc1@telus.net

**O'NEILL LIVESTOCK
LOT TWENTY ONE AND
TWENTY THREE**

Kyle, Jocelyn and Quinn O'Neill
36244 C&E Trail, Red Deer County, AB T4G
0H1
P: 403-877-2615
oneill_livestock@hotmail.com

**PALMER CHAROLAIS
LOT THIRTY THREE**

Velon and Leah Herback
Hunter Herback
Box 17, Bladworth, SK S0G 0J0
Velon: 306-567-7033
Hunter: 306-561-8118
l.herback@sasktel.net

**PRAIRE COVE CHAROLAIS
LOT FOURTEEN**

Tim and Wanda Bullick
Tyler and Justine Bullick
Box 297, Bowden, AB T0M 0K0
Tyler: 403-501-0660
Tim: 403-350-9858
tyler.bullick2014@gmail.com

**RISING SUN RANCH
LOT TWENTY NINE - THIRTY TWO**

Rob McNab
RR 1, Glenbush, SK S0M 0Z0
C: 306-883-7995
risingsunangus@gmail.com

**SPRINGSIDE FARMS
LOT TWENTY THREE**

Mike Panasiuk
608-800 Yankee Valley Blvd SE, Airdrie, AB,
T4A 2L1
C: 250-832-8209
mike.springsidefarms@gmail.com

**STEPPLER FARMS
LOT SIXTEEN**

Andre and Katie Stepler
Box 248, Miami, MB R0G 1H0
H: 204-435-2463 C: 204-750-1951
steppleran@hotmail.com

**TRI-N CHAROLAIS LTD,
LOT TWENTY SEVEN**

Merv, Joanne and Jesse Nykoliation
Box 879, Lenore, MB R0M 1E0
Merv: 204-851-2290
Jesse: 204-851-3391
jnykoliation@yahoo.com

**TRIPLE C CHAROLAIS
LOT SEVENTEEN**

Darren Cook
Box 1, Steep Rock, MB R0C 2Y0
Darren: 204-768-4515
John: 204-302-0687
Shiloh: 204-768-0321
triplec2135@gmail.com

**VOEGELI BROS. CHAROLAIS
LOT EIGHT**

Dorothy and Darlene Voegeli
Box 130, Maymont, SK S0M 1T0
P: 306-389-4605
dvoegeli@litttleloon.ca

**W2 FARMS
LOT TWO**

The Williams Family
Box 555, Lanigan, SK S0K 2M0
C: 306-231-5415
mastonw@gmail.com

**WILGENBUSCH CHAROLAIS
LOT TWENTY FOUR**

Craig and Tricia Wilgenbusch
Box 4, Halbrite, SK S0C 1H0
C: 306-458-7482
ctwilgenbusch@hotmail.com

**WOOD RIVER CHAROLAIS
LOT SEVEN**

Murray and Nicole Blake
Shane and Ann Blake
Box 86, McCord, SK S0H 2T0
Murray: 306-478-7088
Shane: 306-301-9140
woodrivercharolais@sasktel.net

**WRANGLER CHAROLAIS
LOT TWENTY FIVE**

Wade and Sherry Meakin and Family
Box 5554, Westlock, AB T7P 2P5
C: 780-349-1650
wademeakin@msn.com

TERMS:

The terms of the sale are cash or cheque, payable at par at the sale location. The right of property shall not pass until after settlement has been made; no invoicing on buyers in attendance unless previous arrangements have been made. Every animal sells to the highest bidder and in cases of disputes, the auctioneer's decision will be final. Announcements from the auction block will take precedence over the printed matter in the catalogue. Current exchange rates will be announced sale day. All monies are in Canadian funds.

CERTIFICATE OF REGISTRATION:

Each animal will carry papers issued by the Canadian Angus Association unless otherwise stated. A certificate of registry duly transferred will be furnished to the buyer for each animal after payment has been made.

PEDIGREE ESTIMATES:

Pedigree Estimates (PE) are created on the projected mating of the animal's sire and dam based on averages of the two, creating estimated values that do not hold the same accuracy of actual EPDs issued from the association and should be used as such.

HEALTH:

All animals in the sale have met all necessary health requirements.

GUARANTEE:

Each animal becomes the purchaser's risk immediately after the animal is sold. All animals in this sale will be sold under the terms and guarantees set forth by the Canadian Angus Association with regard to health, freedom from defects and from both reproductive and specific genetic unsoundness.

PREGNANCY INFORMATION:

All serviceable age females have been pregnancy examined by an accredited veterinarian, giving an estimated length of gestation. This estimated gestation period shall be used only as a guideline to calving and is not a guarantee of actual service.

LIABILITIES:

All persons attend the sale at their own risk. The seller, facility owner and sale manager assume no liability legal or otherwise, for any accidents that occur. It is understood that T Bar C Cattle Co. (2013) Ltd. is acting only as a medium between buyer and seller and is not responsible for any failure on the part of either party to live up to his obligations. Neither does T Bar C Cattle Co. (2013) Ltd. assume any financial obligations to collect or enforce collection of any monies between parties and any legal action that may in exceptional cases be taken must be between the buyer and the seller. T Bar C Cattle Co. (2013) Ltd. assumes no responsibility for any credit extended by the seller to the buyer. The buyer must look to the seller for fulfillment of all guarantees and representations made hereunder.

DELIVERY:

Every assistance will be given in getting your purchases home. Each animal becomes the risk of the purchaser as soon as sold.

PHONE, MAIL, WIRE BIDS:

Bidders unable to attend the sale may phone, wire or mail their bids and instructions to the sale manager, auctioneer or special representatives. Bids must be received in sufficient time prior to the sale.

INSURANCE:

We strongly recommend that insurance is purchased for full value.

ERRORS:

All announcements at sale time, written or oral, supersede any written material in the catalogue.

**Return Undeliverable
Canadian Addresses To:**

**T Bar C Cattle Co. Ltd.
Box 2330
Warman, SK S0K 4S0**

